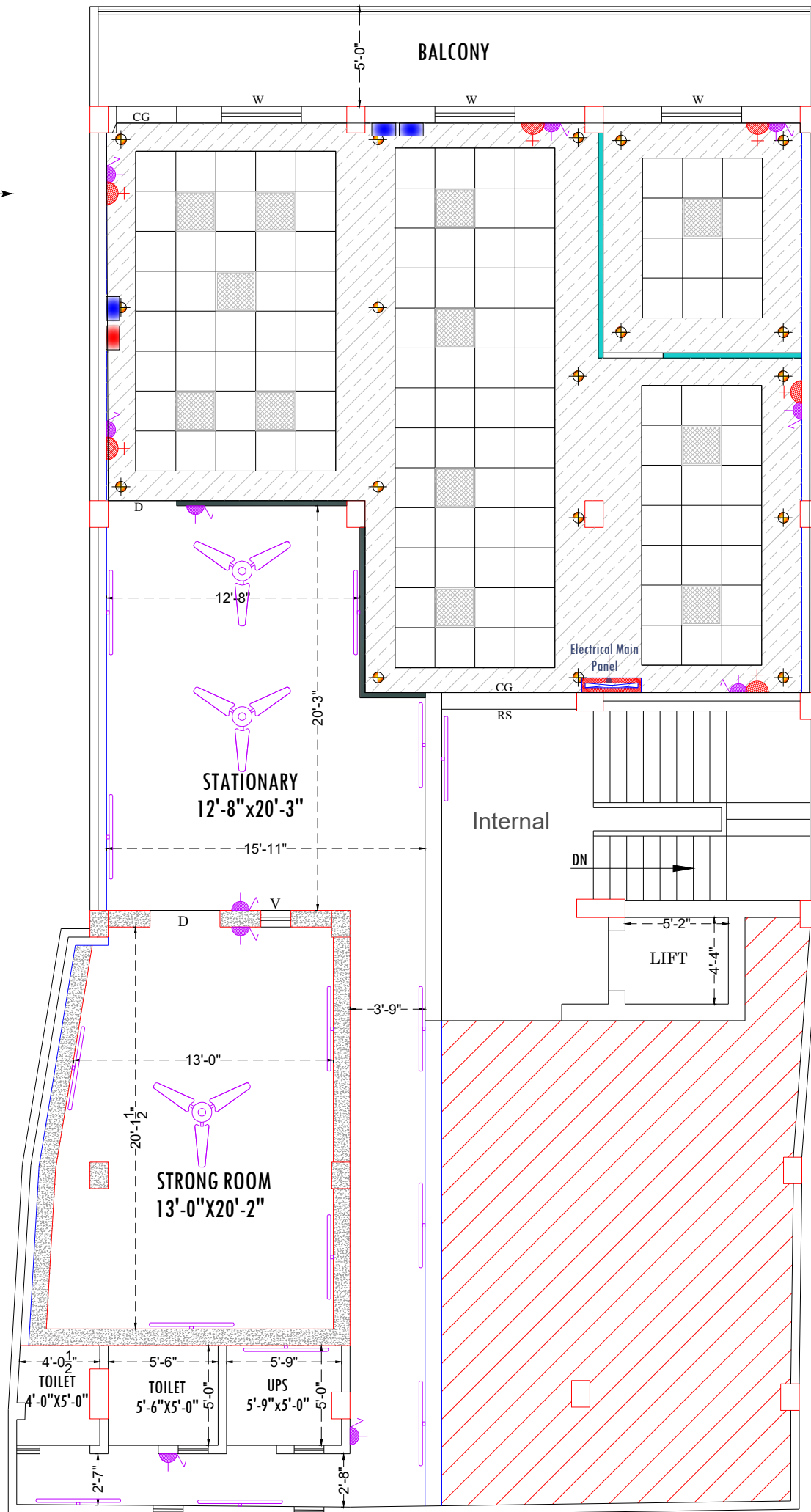
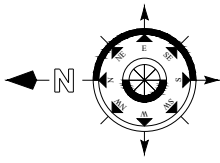


OPTION:-02



TOTAL CARPET AREA (BRANCH)
= 1618.00sqft. (Approximate)

Note :-
* This drawing is property of **FVC** it must not be retained, copied reproduced in any form without written permission of **FVC**.
* Use architectural drawing for detail dimensions.
* In case of any discrepancy in this drawing or difficulty at site this office should be referred.
* Position of power and light points should be compared with the position of geyser and basin from p.h.e. drawing.
* Diameter of sub main conduit is 1" and remaining are of 0.75".

LEGEND		
SYMBOL	DESCRIPTION	HEIGHT
	CEILING FAN	CEILING
	1X4-40W FLUORESCENT FIXTURE	7'-0"
	WALL BRACKET/CFL	7'-0"
	CEILING LIGHT	CEILING
	CHANDELIER	CEILING
	SWITCH BOARD WITH 5 AMP SOCKET	4'-6"
	SWITCH BOARD	4'-6"
	5 PIN 5A PLUG WITH SWITCH	16"/5'6"
	5 PIN 15A POWER PLUG	16"/4'6"
	F/M FOR FREEZE & W/M FOR WASHING	16"/4'6"
	25A A.C. POWER PLUG	16"
	CALL BELL PUSH SWITCH	4'6"
	CALL BELL BUZER	7'-0"
	EXHAUST FAN	7'-0"
	T.V. OUTLET	1'6"
	TELEPHONE OUTLET	1'6"
	FIRE DETECTION SYSTEM	
	DISTRIBUTION BOX	6' 0"
	T.V. JUNCTION BOX	
	JUNCTION BOX	
	L.T. MAIN CONTROL PANEL	
	WAY FOR T.V. & TELEPHONE WIRING.	
	WAY FOR POINT WIRING. (25mm dia pipe)	
	WAY FOR POINT WIRING (19mm dia pipe)	
	WAY FOR SUB MAIN WIRING.	
	WAY FOR POWER POINT WIRING.	
	WAY FOR CIRCUIT WIRING.	

ROOF HT. 10'-0"

BEAM HT. 9'-0"

FIRST FLOOR PLAN

ELECTRICAL LAYOUT PLAN -02

NOTE	PROJECT:-	REVISION:-	Sheet title :-				
			FURNITURE LAYOUT PLAN				
HALF HT. PARTITION	PROPOSED INTERIOR LAYOUT OF CANARA BANK AT- PUPRI BRANCH	No.	Date :-	Scale :-	Date :-	Drawn by :-	Checked by :-
SEMI GLAZED FULL HT. PARTITION				N.T.S	29/07/2025	RAHUL SINGH	
SOLID FULL HT. PARTITION				Architects :-			
7' HT. PARTITION				ARTCON DESIGN CONSULTANTS ARCHITECTS ENGINEERS INTERIOR DESIGNERS COMPUTER AIDED DESIGN G-04 Laxmi Palace, Mitra Compound, Boring Road, Patna - 800001 +91 9931723771, amitkumar73@gmail.com +91 9386717726 artcondesignconsultants.com			