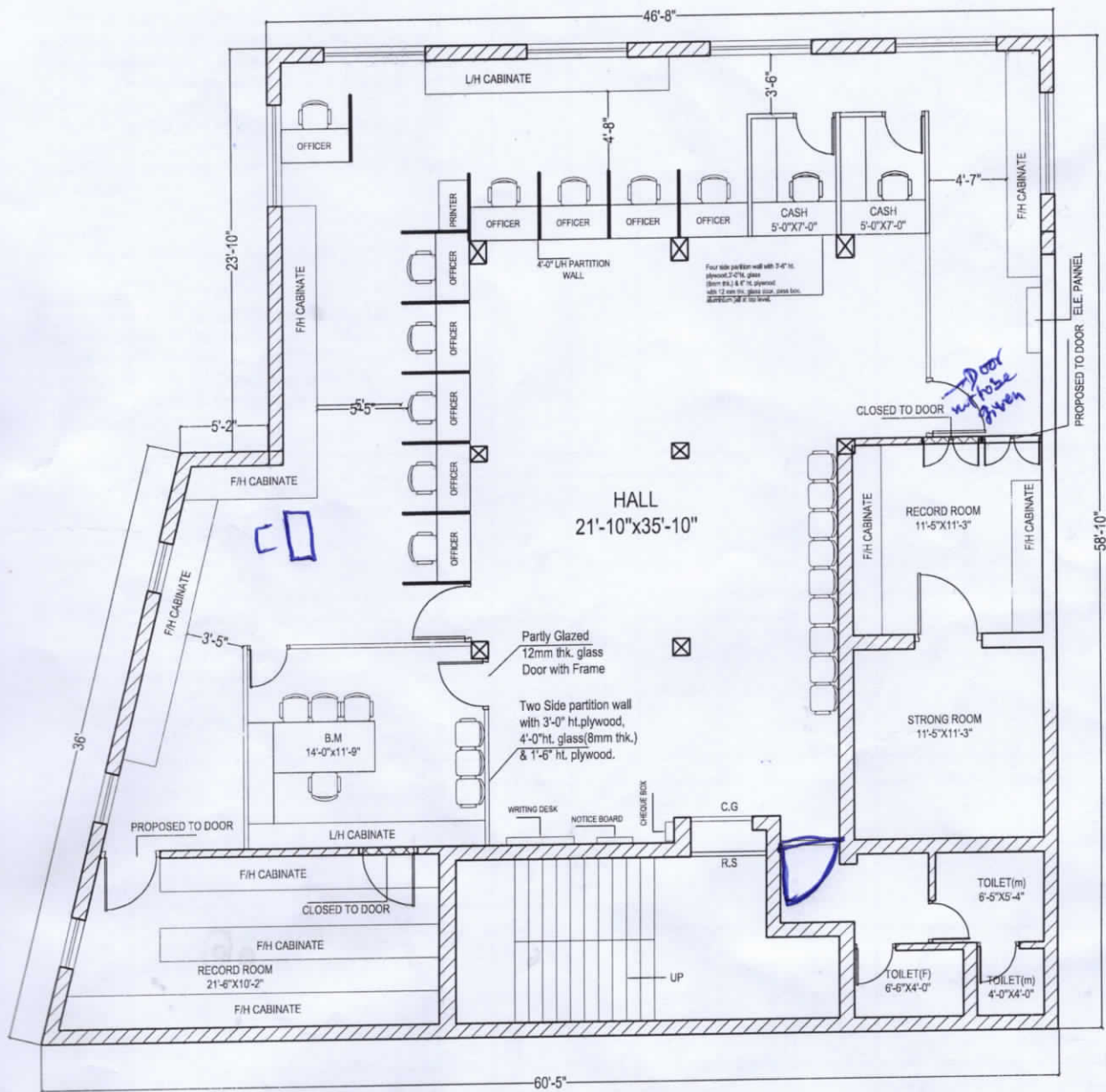


2.5



FIRST FLOOR  
 AREA = 2507.31 SQ. FT.

PROPOSED INTERIOR LAY OUT FOR CARANA  
 BANK HAZARIBAGH BRANCH.

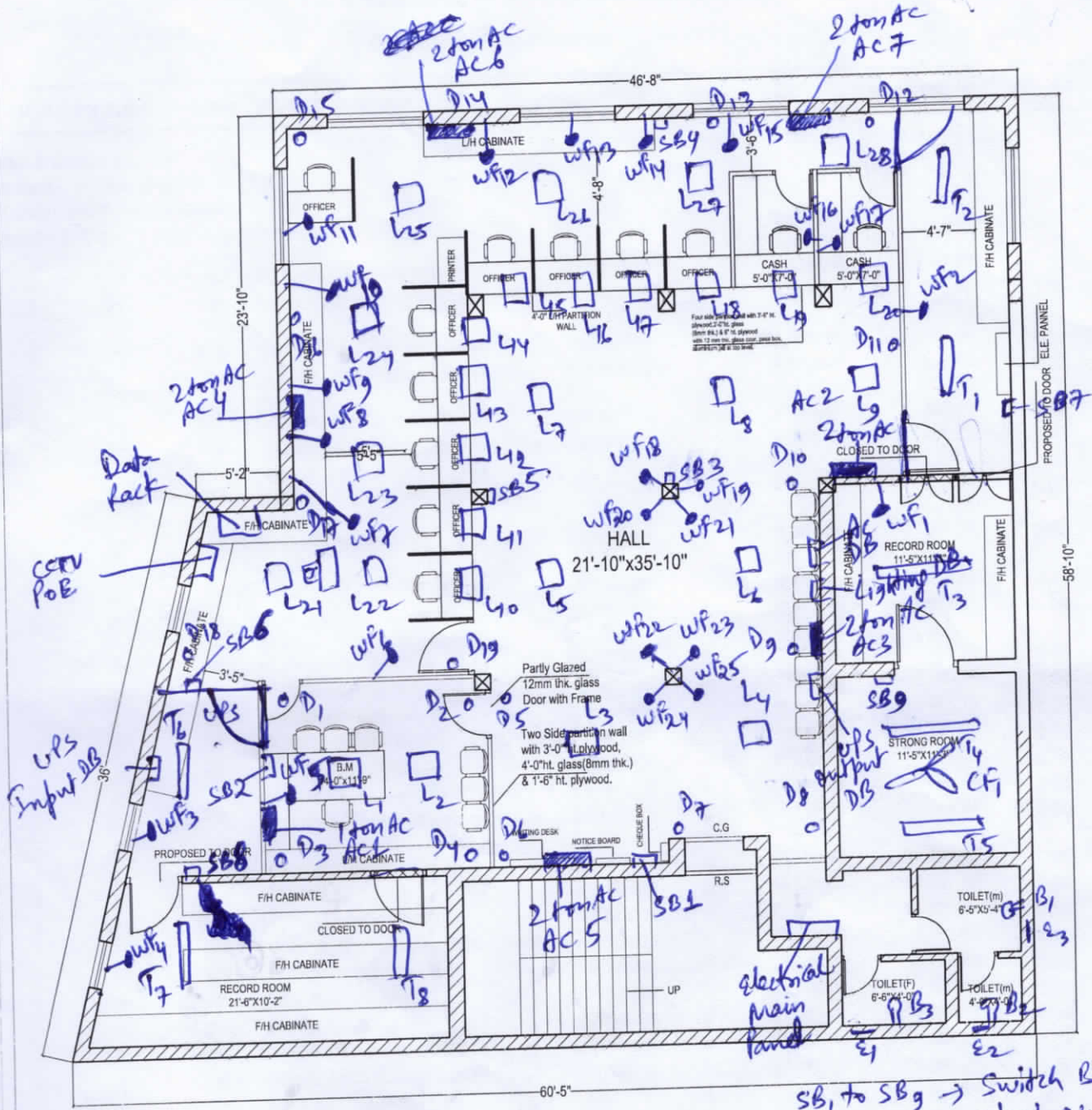
SHEET NO- ARC/01  
 DATE - 2025.09.01



Design Oriented Technicas  
 303 Urmila apartment,  
 Thaparokan, Ranchi-834001  
 email:doticonsultant@gmail.com  
 Web:www.doticonsultant.in  
 Tel:9934114276, 9471550077



Internal



FIRST FLOOR  
AREA = 2507.31 SQ FT.

- SB1 to SB9 → Switch Boards
- L1 to L28 → 2'x2' 36w Lights
- D1 to D19 → 12w LED Downlighter
- T1 to T8 → 22w LED Tubelight
- B1 to B3 → 12w LED Bulb
- E1 to E2 → Exhaust Fan

PROPOSED INTERIOR LAY OUT FOR CARANA  
BANK HAZARIBAGH BRANCH.

SHEET NO- ARC/01  
DATE - 2025.09.01



Design Oriented Techniques  
303 Urmila apartment,  
Thapada, Ranchi-834011  
email: doct@doct.com  
Web: www.doct.com  
Tel: 9834114278, 9471590777



Internal

- CF1 → Ceiling Fan
- WF1 to WF25 → wall Mounted Fan
- → UPS lights
- 1 ton AC - 1
- 2 ton AC - 6