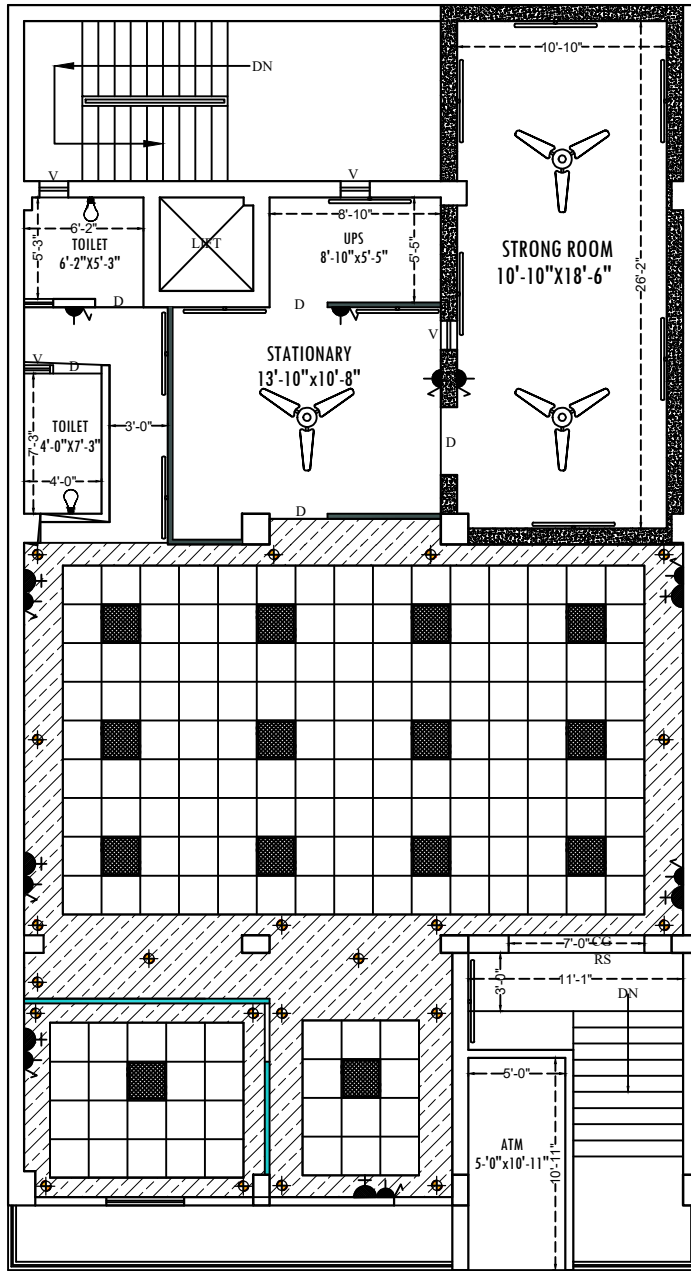


OPTION:-03

ROOF HT. 10'-7"

BEAM HT. 9'-6"



FIRST FLOOR PLAN



Internal

Note :-

- * This drawing is property of **FVC** it must not be retained, copied reproduced in any form without written permission of **FVC**.
- * Use architectural drawing for detail dimensions.
- * In case of any discrepancy in this drawing or difficulty at site this office should be referred.
- * Position of power and light points should be compared with the position of geyser and basin from p.l.e drawing.
- * Diameter of sub main conduit is 1" and remaining are of 0.75".

LEGEND

SYMBOL	DESCRIPTION	HEIGHT
	CEILING FAN	CEILING
	1X4' 40W FLUORESCENT FIXTURE	7'-0"
	WALL BRACKET/CFL	7'-0"
	CEILING LIGHT	CEILING
	CHANDELIER	CEILING
	SWITCH BOARD WITH 5 AMP SOCKET	4'-6"
	SWITCH BOARD	4'-6"
	5 PIN SA PLUG WITH SWITCH	18"/56"
	5 PIN 15A POWER PLUG	18"/46"
	F/M FOR FREEZE & W/M FOR WASHING	18"/46"
	25A A.C. POWER PLUG	16"
	CALL BELL PUSH SWITCH	46"
	CALL BELL BUZZER	7'-0"
	EXHAUST FAN	7'-0"
	T.V. OUTLET	16"
	TELEPHONE OUTLET	16"
	FIRE DETECTION SYSTEM	
	DISTRIBUTION BOX	6' 0"
	T.V. JUNCTION BOX	
	JUNCTION BOX	
	L.T. MAIN CONTROL PANEL	
	WAY FOR T.V. & TELEPHONE WIRING.	
	WAY FOR POINT WIRING. (25mm dia pipe)	
	WAY FOR POINT WIRING (19mm dia pipe)	
	WAY FOR SUB MAIN WIRING.	
	WAY FOR POWER POINT WIRING.	
	WAY FOR CIRCUIT WIRING.	



- HALF HT PARTITION
- 7' HT PARTITION
- SEMI GLAZED FULL HT PARTITION
- SOLID FULL HT PARTITION

CLINT:-
CANARA BANK

PROJECT:-
PROPOSED PLAN LAYOUT
CANARA BANK
AT- JAHANABAD BRANCH

SHEET TITLE:-
FIRST FLOOR PLAN
ELECTRICAL LAYOUT PLAN -02

NO.	REVISION	DATE	BY	CHKD.
NTS		18/08/2025	SAMUEL SINGH	ANU ADUL KHADEM

ARCHITECT:-
ARTCON DESIGN CONSULTANTS
P. CHITRAN, S. H. GOUD, M. R. S.
ARTCON DESIGN CONSULTANTS
G-04 Laxmi Park, Mira Compound, Boring
B & B, P. O. F. O. - 500 001
91 9892737771, 9892737772, 9892737773
91 9892737772, 9892737773