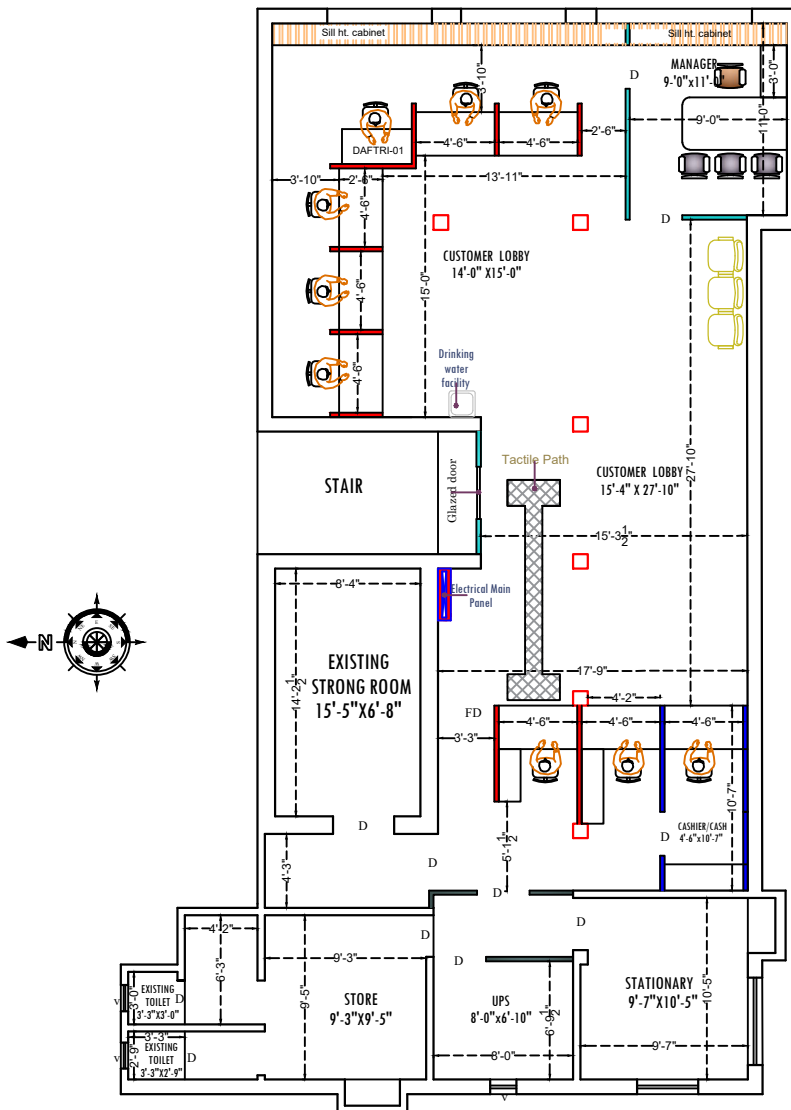


R O A D

**ROOF HT. 10'-0"**

**BEAM HT. 9'-6"**



**FIRST FLOOR PLAN**

NOTE	PROJECT:-	REVISION:-	Sheet title :- <b>FURNITURE LAYOUT PLAN</b>			
<p><span style="display:inline-block; width:15px; height:15px; background-color:red; border:1px solid black;"></span> HALF HT. PARTITION</p> <p><span style="display:inline-block; width:15px; height:15px; background-color:lightblue; border:1px solid black;"></span> SEMI GLAZED FULL HT. PARTITION</p> <p><span style="display:inline-block; width:15px; height:15px; background-color:grey; border:1px solid black;"></span> SOLID FULL HT. PARTITION</p> <p><span style="display:inline-block; width:15px; height:15px; background-color:blue; border:1px solid black;"></span> 7' HT. PARTITION</p>	<p>PROPOSED INTERIOR LAYOUT OF <b>CANARA BANK</b></p> <p><b>AT- HANUMAN NAGAR BRANCH</b></p>	<p>No.      Date :-</p> <p>REV-04    08/07/2025</p>	<p>Scale :-      Date :-</p> <p>N.T.S    29/05/2025</p>	<p>Drawn by :-</p> <p>RAHUL SINGH</p>	<p>Checked by :-</p> <p>Ar. Anviti Kulkarni</p>	
<p>Architects :-</p> <p><b>artcon</b> DESIGN CONSULTANT</p>			<p><b>ARTCON DESIGN CONSULTANTS</b> ARCHITECTS ENGINEERS INTERIOR DESIGNERS COMPUTER AIDED DESIGN G-04 Laxmi Palace, Mitra Compound, Boring R o a d    P a t n a    - 8 0 0 0 1 +91 9937232771    anvikumar73@gmail.com +91 9386717726    artcondesignconsultants.com</p>			